

# Milling service

---





## Shapemakers has the ideal material for every mold.

Milling molds for orthopedics is a crucial technique in the design and production of orthopedic aids. The process typically begins with scanning the body part for which the aid is intended, such as the foot or ankle. Using CAD software, a digital mold design is created and then converted into CNC programming.

Using a CNC milling machine, the mold design is then milled into a block of PIR, PUR, or MDF foam. Both PIR and PUR foams can be chosen for milling molds, with the difference lying in the foam's cell structure.

Milling molds offer several advantages over traditional methods of mold-making. It is faster, more accurate, and reduces the chances of human errors. Additionally, digital designs can be easily modified, increasing the flexibility and efficiency of the production process.

For each order, we recommend the most suitable foam type, and we are always available for consultation. We treat each order with a unique and customized milling program.





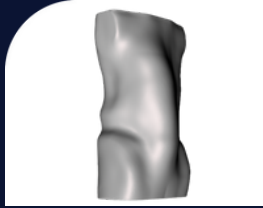
**HO**



Recommended material

HSI200, HSI300  
MDF

**TLSO**



Recommended material

HSU80, HSI80, HSI100

**WHO**



Recommended material

HSU240, HSI300

**AK**



Recommended material

HSU80, HSI80, HSI100,  
HSI145

**BK**



Recommended material

HSI80, HSU100, HSI100,  
HSI145

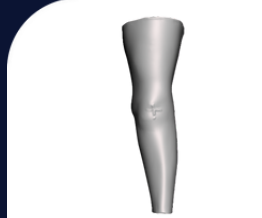
**AFO**



Recommended material

HSU160, HSI200, HSI300  
MDF

**KO**



Recommended material

HSU80, HSI100, HSI145

**KAFO**



Recommended material

HSI145, HSI200, HSI300

**SO**



Recommended material

HSI145, HSI200, HSI300

**Knee Extention**



Recommended material

HSI145, HSI200

**FAI**



Recommended material

HSU80, HSI100, HSI145,  
HSI200

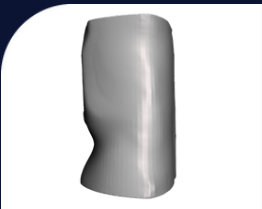
**SMO**



Recommended material

HSI200, HSI300  
MDF

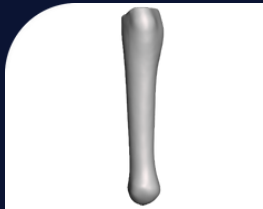
**Hip**



Recommended material

HSI100, HSI145, HSI200

**Syme**



Recommended material

HSI145, HSI200, HSI300

**Active Collar**



Recommended material

HSI145, HSI200

**Elbow**



Recommended material

HSI200, HSI300  
MDF



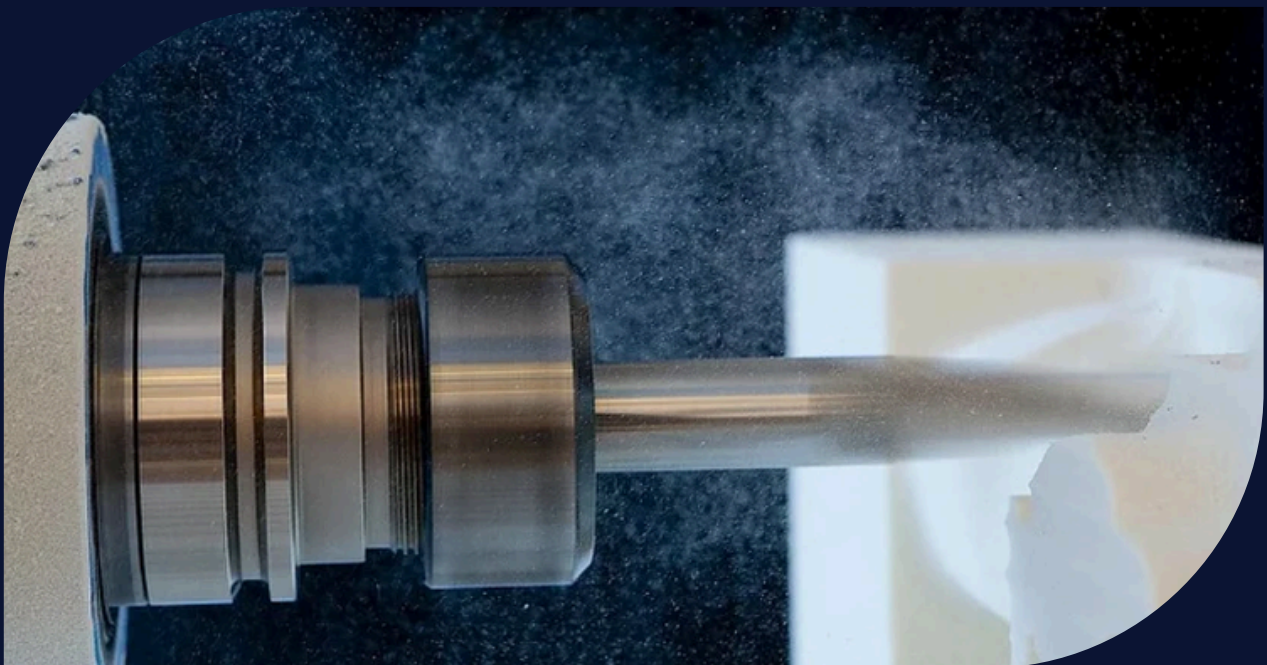
Shapemakers not only provides the right density but also offers additional editing capabilities for the perfect mold.

Shapemakers offers various densities of hard foam PIR (HSI) and PUR (HSU) for milling molds. These range from HSI80 to HSI300, and HSU80 to HSU240. Additionally, we also mill using MDF, which is similar to HSI700.

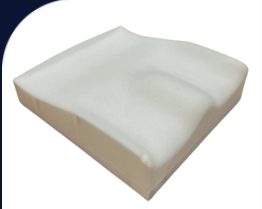
Each model requires an optimal material to use. That's why we have chosen a wide range of options.

To get started with your mold right upon receiving it, Shapemakers provides the following extra options:

- A hole with a diameter of 10 mm, 12 mm, 20 mm, or 30 mm.
- A stake with a diameter of 10 mm or 12 mm, with a minimum length of 15 cm.



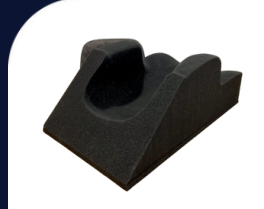
## Cushion



Recommended material

HDH 35100,  
Polyether 4080

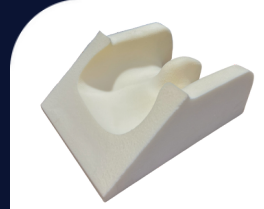
## Back part



Recommended material

HDH 35100,  
Polyether 4080

## Seat part



Recommended material

HDH 35100,  
Polyether 4080

## Complete seat



Recommended material

HDH 35100,  
Polyether 4080

## Matrass



Recommended material

HDH 35100,  
Polyether 4080

## Fast milling service for both custom and mass production of soft foam products.

Shapemakers offers a variety of foam materials for our soft foam milling service, including Frame Foam White, HDH 351000, and Polyether 4080. These materials are known for their quality and durability in use. These types of foam can be used for various purposes, including milling seat cushions and mattresses.

Additionally, there is the option for customers to provide their own foam and have it milled. This allows for work to be done with familiar material. Thanks to our extensive range of machinery, soft foam milling can be quickly produced with consistent quality.

## Design service for sitting aids

Shapemakers not only distinguishes itself with the production of sitting aids, but also offers extensive design services. Therefore the whole process can be outsourced by one party.

Based on a rough scan and a detailed measurement scheme, a software specialist from Shapemakers works on refining this model. This process ensures that each design is optimized and tailored to the customer's wishes.

This service guarantees a precise and efficient realization of each project.

